

# SOLAR MODULE MOUNTING STRUCTURES

ALUMINIUM

1M/2M MODELS





## MODULE MOUNTING STRUCTURE

ASTERIX provides PV mounting solutions with quality, design, durability for rooftop mounting systems to accommodate the needs of any type of solar array installation.

### Flat Roof Mount

#### **Save time and money with the most revolutionary flat roof mounting solution in the world!**

Engineered for flat roof mounting applications, ASTERIX RoofMount is a non-penetrating solution that can be installed at a rate of 2-3kW per man hour, making it one of the fastest, easiest and most cost-effective solutions on the market today. The configurable design accommodates 0-30 degree module tilt and best of all, requires no ballast blocks or concrete in 90-120 mph basic wind zones.

#### **Maximum flexibility**

- Flush, high-profile or low-profile configurations
- Roof or ground mount
- Pitched or flat roof

#### **Ease of installation**

- Installer-friendly components
- Minimized penetration with longer attachment spans than competitive products
- Designed with customer input

#### **Impressively Innovative - Value and Quality**

- Self ballasting system in 90-120 mph wind zones
- Freedom and flexibility accommodates majority of PV modules
- Maintains roofing system warranty

#### **Engineered Smart - Assemble, Don't Build**

- No field fabrication required
- Installs at 2-3 kW per man hour

#### **Strength – Bigger, Fewer, Better**

- Install with 1 socket wrench
- Economical aluminium components and stainless steel fasteners.

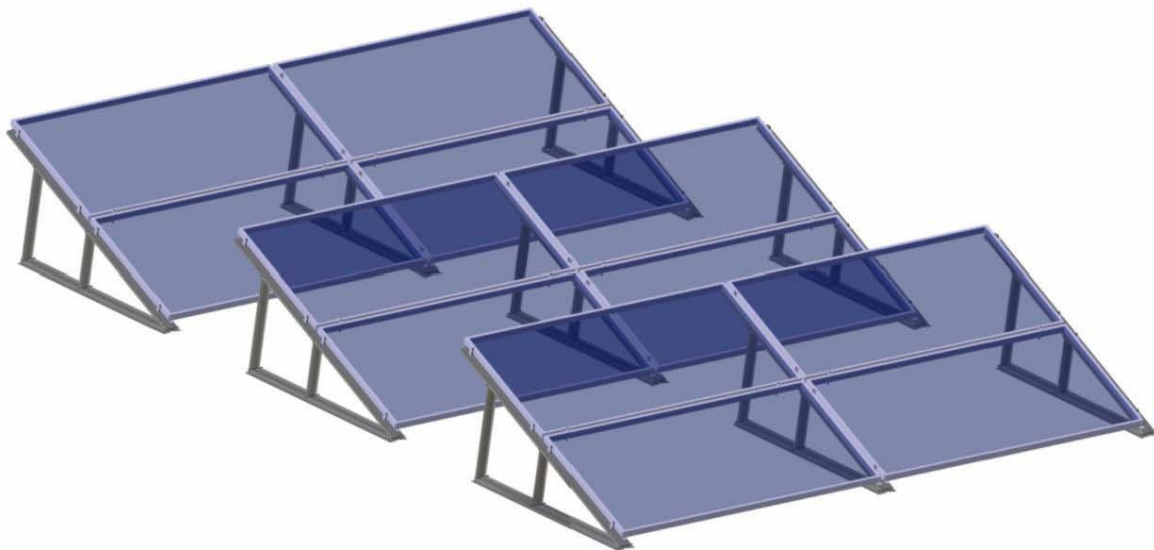
#### **Faster, Flexible Components**

- Configurable tilt angles, support 0-30 degrees
- Configurable roof touch points
- Compatible with off-the-shelf wire management

## 2M – SOLAR MODULE MOUNTING STRUCTURE

### TECHNICAL DATA

<b>CONFIGURATION :</b>	AERODYNAMIC DESIGN, TWO MODULE STRUCTURE
<b>INSTALLATION TYPE :</b>	FLAT ROOF / PITCHED ROOF
<b>DESIGN LIFETIME :</b>	20 YEARS
<b>SIZE :</b>	2000 x 1800 MM
<b>MATERIAL :</b>	ALUMINIUM ALLOY - 6063 T6
<b>TILT ANGLE :</b>	10° -12° (FLAT ROOF)
<b>TRACKER TYPE :</b>	FIXED
<b>DESIGN WIND LOAD :</b>	55 M/S OR 200 KM/HR
<b>DESIGN SNOW LOAD :</b>	1.8 KN/M <sub>2</sub>
<b>PANEL TYPE :</b>	ANY TYPE OF PV MODULES
<b>MODULE ORIENTATION :</b>	LANDSCAPE OR PORTRAIT
<b>STRUCTURE :</b>	ANODIZED ALUMINIUM
<b>DISTANCE FROM GROUND TO PANEL :</b>	100 MM
<b>DISTANCE BETWEEN PANEL AIRGAP :</b>	25 MM
<b>TOTAL WEIGHT FOR 1KW :</b>	10 - 12 KGS
<b>MAINTENANCE :</b>	FREE, PANEL CLEANING AS REQUIRED



## 1M – SOLAR MODULE MOUNTING STRUCTURE

### TECHNICAL DATA

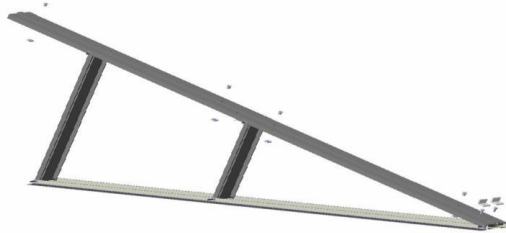
<b>CONFIGURATION :</b>	AERODYNAMIC DESIGN, TWO MODULE STRUCTURE
<b>INSTALLATION TYPE:</b>	FLAT ROOF / PITCHED ROOF
<b>DESIGN LIFETIME :</b>	20 YEARS
<b>SIZE :</b>	1000 x 900 MM
<b>MATERIAL :</b>	ALUMINIUM ALLOY - 6063 T6
<b>TILT ANGLE :</b>	0° - 60° (FLAT ROOF) & CUSTOMIZED (PITCHED ROOF)
<b>TRACKER TYPE :</b>	FIXED
<b>DESIGN WIND LOAD :</b>	55 M/S OR 200 KM/HR
<b>DESIGN SNOW LOAD :</b>	1.8 KN/M <sup>2</sup>
<b>PANEL TYPE :</b>	ANY TYPE OF PV MODULES
<b>MODULE ORIENTATION :</b>	LANDSCAPE OR PORTRAIT
<b>STRUCTURE :</b>	ANODIZED ALUMINIUM
<b>DISTANCE FROM GROUND TO PANEL :</b>	100 MM
<b>DISTANCE BETWEEN PANEL AIRGAP :</b>	25 MM
<b>TOTAL WEIGHT FOR 1KW :</b>	8 - 10 KGS
<b>MAINTENANCE :</b>	FREE, PANEL CLEANING AS REQUIRED



## Overview of System Components



**MMS ASSEMBLY**



**Standard Installation:**

